



IT Fundamentals

CHAPTER 7:

DATABASE FUNDAMENTALS

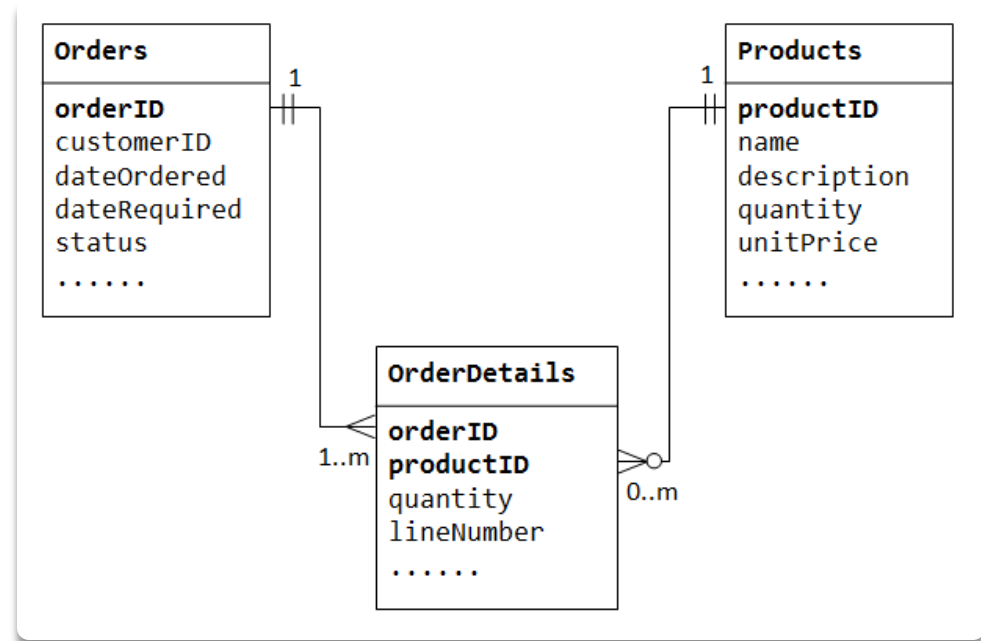
When to Use Databases

- ▶ Multiple concurrent users
- ▶ Scalability
- ▶ Speed
- ▶ Variety of data
- ▶ Number of records
- ▶ Data persistence
- ▶ Security



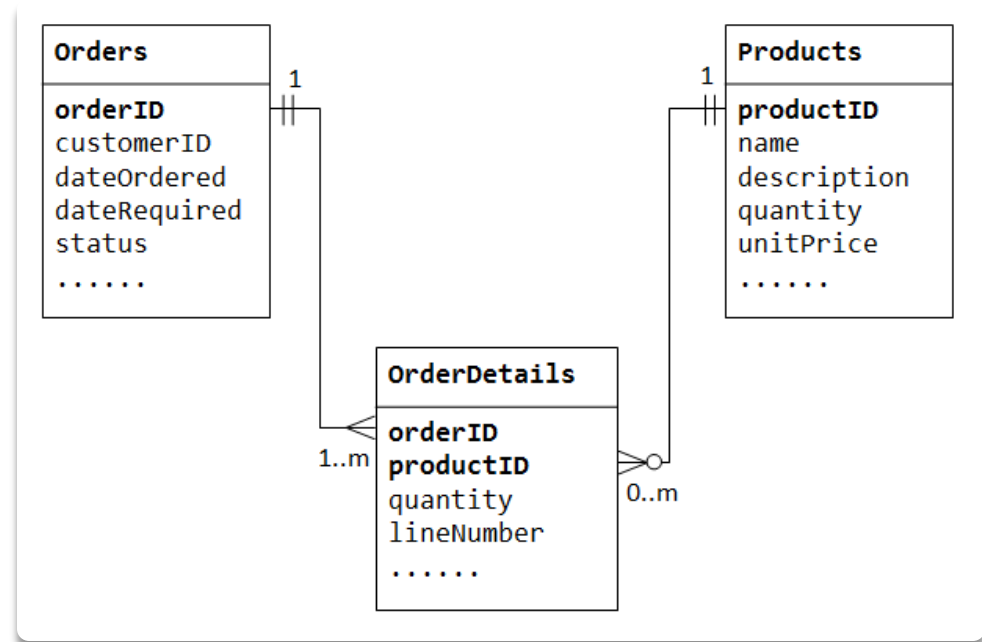
Relational Databases

- ▶ Managed by a relational database management system (RDBMS)
- ▶ Schema
 - ▶ Logical schema
 - ▶ Physical schema



Relational Database Components

- ▶ Tables
- ▶ Fields
- ▶ Records
- ▶ Forms
- ▶ Queries
- ▶ Reports
- ▶ Macros and modules



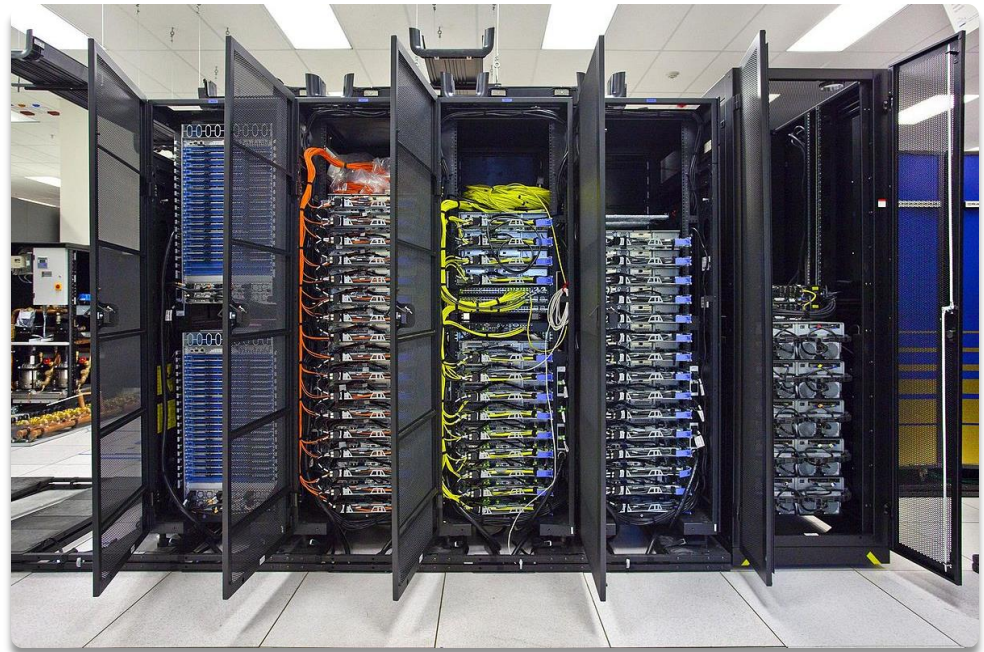
Non-relational databases

- ▶ Managed by a database management system (DBMS)
- ▶ Hold non-structured (or unstructured) or semi-structured data
- ▶ Document databases
- ▶ Key/value databases

row key	columns ...			
jbellis	name	email	address	state
	jonathan	jb@ds.com	123 main	TX
dhutch	name	email	address	state
	daria	dh@ds.com	45 2 nd St.	CA
egilmore	name	email		
	eric	eg@ds.com		

Working with Databases

- ▶ Manual access
- ▶ Direct access
- ▶ Programmatic access
- ▶ User interface and utility access
- ▶ Database permissions



Creating and Managing a Relational Database

- ▶ Commands
 - ▶ Create
 - ▶ Alter
- ▶ Importing data
 - ▶ Load command
- ▶ Removing databases and tables
 - ▶ Drop command



Manipulating Data

- ▶ Commands
 - ▶ Insert
 - ▶ Update
 - ▶ Delete
 - ▶ Select



Backing Up Databases

- ▶ Database dump
- ▶ Backup



Chapter 7: Database Fundamentals

- ▶ Explain database concepts and the purpose of a database
 - ▶ Usage of database
 - ▶ Create
 - ▶ Import/input
 - ▶ Query
 - ▶ Reports
 - ▶ Flat file vs. database
 - ▶ Multiple concurrent users
 - ▶ Scalability
 - ▶ Speed
 - ▶ Variety of data
 - ▶ Records
 - ▶ Storage
 - ▶ Data persistence
- ▶ Compare and contrast various database structures
 - ▶ Structured vs. semi-structured vs. non-structured
 - ▶ Relational databases
 - ▶ Schema
 - ▶ Tables
 - ▶ Rows/records
 - ▶ Fields/columns
 - ▶ Primary key
 - ▶ Foreign key
 - ▶ Constraints
 - ▶ Non-relational databases
 - ▶ Key/value databases
 - ▶ Document databases
- ▶ Summarize methods used to interface with databases
 - ▶ Relational methods
 - ▶ Data manipulation
 - ▶ Select
 - ▶ Insert
 - ▶ Delete
 - ▶ Update
 - ▶ Data definition
 - ▶ Create
 - ▶ Alter
 - ▶ Drop
 - ▶ Permissions
 - ▶ Database access methods
 - ▶ Direct/manual access
 - ▶ Programmatic access
 - ▶ User interface/utility access
 - ▶ Query/report builders
 - ▶ Export/import
 - ▶ Database dump
 - ▶ Backup